
Antimicrobial activity from endophytic fungi isolated from plant leaves in Dipterocarpaceae forest at Viengsa district Nan province, Thailand

Sutjaritvorakul, T.^{1*}, Whalley, A.J.S.², Sihanonth, P.³ and Roengsumran, S.⁴

¹Program of Biotechnology, Faculty of Science, Chulalongkorn University, Bangkok 10330, Thailand.

²School of Pharmacy and Biomolecular Sciences, Liverpool John Moores University, Byrom Street, Liverpool L3 3AF, United Kingdom.

³Department of Microbiology, Faculty of Science, Chulalongkorn University, Bangkok 10330, Thailand.

⁴Department of Chemistry, Faculty of Science, Chulalongkorn University, Bangkok 10330, Thailand.

Sutjaritvorakul, T., Whalley, A.J.S., Sihanonth, P. and Roengsumran, S. (2011). Antimicrobial activity from endophytic fungi isolated from plant leaves in Dipterocarpaceae forest at Viengsa district Nan province, Thailand. *Journal of Agricultural Technology* 7(1): 115-121.

Eleven fungal endophytes representing different morphotaxa were characterized from 68 cultures, which were isolated from 4 species of Dipterocarpaceae trees (*Dipterocarpaceae tuberculatus* Roxb., *Shorea obtusa* Wall., *Shorea siamensis* Miq. and *Dalbergia oliveri* Gamble.) growing in the Dipterocarpaceae forest at Viengsa district, Nan province. Species of *Phyllosticta* spp. (15 isolates), *Nodulisporium* spp. (13 isolates) and *Xylaria* sp.1 (10 isolates) were the most frequently found. All endophytic fungal isolates were tested for potential production of bioactive metabolites. They were tested for antimicrobial activity against pathogenic microorganisms such as *Staphylococcus aureus*, *Bacillus subtilis*, *Pseudomonas aeruginosa*, *Escherichia coli* and *Candida albicans* by the paper disk susceptibility test. They inhibited the growth of Gram positive bacteria more than Gram negative bacteria. *Candida albicans* was inhibited only by *Nodulisporium* sp. (DT6) and *Xylaria* sp.1 (DO9).

Key words: Endophytic fungi, Antimicrobial activity, Dipterocarpaceae forest

Introduction

Microbial endophytes are microorganisms which grow intercellularly and asymptotically within living tissues establishing mutual relationship with the host plants (Petrini, 1991). Fungal endophytes have also been recognized as a repository of novel secondary metabolites, some of which have beneficial biological activities (Bills and Polishook, 1991). There are many reports about

* Corresponding author: Thanawat Sutjaritvorakul; e-mail: thana5306@hotmail.com

antimicrobial compounds produced by endophytic fungi in culture that are active against plant and human pathogenic microorganisms. Chareprasert *et al.* (2006) reported on antimicrobial activity exhibited by endophytic fungi isolated from teak and rain tree and they were found to produce some metabolites active against bacteria and a yeast. New bioactive metabolites (e.g. asperfumin) produced by *Aspergillus fumigatus* CY018, an endophytic fungus, has been shown to inhibit *Candida albicans* (Liu *et al.*, 2004). Fungal endophytes are considered to be a potential source for novel bioactive products (Strobel, 2003). The aim of the current research was to investigate the antimicrobial potential of endophytic fungi and this is the first report on screening of endophytic fungi from Nan province, Thailand.

Material and methods

Plant sample collection

Mature healthy plant leaves were collected by sampling from different parts of the trees (Table 1) growing in the Dipterocarpaceae forest at Viengsa district, Nan province. All samples were stored in sterile polythene bags in an icebox and chilled samples (4.5°C) were used to isolate endophytic fungi within 48 h of collection.

Isolation and identification of endophytic fungi

Discs of leaves (0.5 cm diameter) were cut using a sterile pinch cutter. Samples were washed thoroughly in running tap water. Surface of the plant tissues was treated by following the methodology of Murali *et al.* (2007). Plant tissues were immersed in 75% ethanol for 1 min and in an aqueous solution of sodium hypochlorite (2.5% available chlorine) for 15 min, followed by washing with 70% ethanol for 5 sec. The tissues were then rinsed in sterile distilled water and allowed to surface-dry under sterile conditions. The surface-sterilized samples were placed on petri dishes containing Potato Dextrose Agar (PDA) (supplemented with streptomycin (100 µg ml⁻¹) to inhibit bacterial growth) and incubated at room temperature at around 25°C.

Endophytic fungi were identified according to their macro and microscopic structures. The taxa were assigned to genera following Barnett and Hunter (1998) and von Arx (1978).

Table 1. Species of host plants in Dipterocarpous forest at Viengsa district, Nan province.

NO.	Plant species	Code	Family
1	<i>Dipterocarpus tuberculatus</i> Roxb.	DT	DIPTEROCARPACEAE
2	<i>Shorea obtusa</i> Wall.	SO	DIPTEROCARPACEAE
3	<i>Shorea siamensis</i> Miq.	SS	DIPTEROCARPACEAE
4	<i>Dalbergia oliveri</i> Gamble.	DO	PAPILIONACEAE

Fermentation and extraction

Seven day-old cultures on PDA of the endophytic fungi were inoculated into Malt Extract Both (MEB) in Erlenmeyer flasks 250 ml, followed by static condition and incubated for 30 days at 25°C. The fermentation broth of each fungal endophyte was filtered, and the filtrate was extracted three times with ethyl acetate (EtOAc) at room temperature. Evaporation of the extracted solution was done in a rotary evaporator.

Antimicrobial activity assay

Five reference human pathogenic microorganisms were used for the antimicrobial activity assay including two Gram positive bacteria, *Staphylococcus aureus* (STAPY), *Bacillus subtilis* (BACIL) and two Gram negative bacteria, *Pseudomonas aerogenosa* (PSEUD), *Escherichia coli* (ESCHE) and the yeast, *Candida albicans* (CAND). Antimicrobial activity was determined using the paper disk susceptibility test (Wang *et al.*, 1999). A sterilized filter paper was dipped into the extracts and then placed on to the lawn of reference microorganisms. The magnitude of antimicrobial activity was assessed by the diameter of inhibition zones relative to those of positive and negative controls. Streptomycin and nystatin were co-assayed as positive controls, and 10% DMSO as a negative control.

Results and discussion

From 80 leaf segments (20 from each host species) from 4 Dipterocarpous trees belonging to 2 families (Table 1), 68 isolates were obtained, representing 11 endophytic fungi of different morphotaxa (Fig. 1). The leaves of the Dipterocarpous plants were highly colonized by *Phyllosticta* spp. with 15 isolates, *Nodulisporium* spp, 13 isolates and *Xylaria* sp.1 consisting of 10 isolates (Table 2).

Hypomyces of the Deuteromycotina are common fungal endophytes among plants inhabiting temperate, tropical and rain forest vegetations (Bacon and White 1994). Deuteromycetous fungal isolates, as endophytes in mangrove

vegetations of costal Karnataka, Picchavaran and Podicherry (India) were more prevalent than members of the Ascomycotina (Maria and Sridhar, 2003; Suryanarayanan *et al.*, 1998).

Table 2. Endophytic fungi isolated from Dipterocarpous plants.

Endophytic fungi	Classification	Plant species				Total
		DT	SO	SS	DO	
<i>Phyllosticta</i> spp.	Coelomycetes	-	-	8	7	15
<i>Pestalotiopsis</i> sp	Coelomycetes	2	-	-	3	5
<i>Fusarium</i> sp.	Hyphomycetes	-	-	2	-	2
<i>Nodulisporium</i> spp	Hyphomycetes	10	3	-	-	13
<i>Paecilomyces</i> sp.	Hyphomycetes	-	-	-	5	5
<i>Penicillium</i> sp.	Hyphomycetes	-	2	2	1	5
<i>Phomopsis</i> sp.	Coelomycetes	2	3	3	-	8
<i>Xylaria</i> sp.1	Ascomycetes	3	4	-	3	10
<i>Xylaria</i> sp.2	Ascomycetes	-	-	1	-	1
<i>Xylaria</i> sp.3	Ascomycetes	-	-	-	2	2
<i>Daldinia</i> sp.	Ascomycetes	-	2	-	-	2
Total		17	14	16	21	68

In this study, however, coelomycetes were found to be more numerous than those of hyphomycetes and ascomycetes. From the results, the most common genus was *Phyllosticta* which is certainly known as the plant pathogen but may also occur endophytically. Crude extracts of 68 fungal isolates were tested for antimicrobial activities, 50 (73.52%) of endophytic fungi produced secondary metabolites antagonistic to Gram positive bacteria and 26(38.23%) of endophytic fungi could inhibit the growth of Gram negative bacteria. Moreover, 13(19.11%) could inhibit the growth of *Candida albicans* but 18 (26.47%) of endophytic fungal extracts had no effect on reference microorganisms. The results show the size of inhibition zone of different endophytic fungi from each host plant (Table 3). The crude extracts of *Nodulisporium* sp. (DT6) and *Xylaria* sp.1 (DO9) exhibited antimicrobial activity against all test microorganisms. *Pestalotiopsis* sp. (DO2) could inhibit the growth of *Bacillus subtilis* with the highest inhibition zone of about 20 mm. These results are in agreement with the results obtained for endophytic fungi isolated from teak (*Tectona grandis* L.) and rain tree (*Samanea saman* Merr.) leaves (Chareprasert *et al.*, 2006), which found that the endophytic fungi from teak and rain tree could inhibit the growth of Gram positive bacteria such as *Staphylococcus aureus* and *Bacillus subtilis* to a greater degree than Gram negative bacteria (*Escherichia coli*). Lumyong *et al.* (1999) also reported that endophytic fungal strains E 4.11 and E 4.22 isolated from *Lithocarpus* sp. could

produce some metabolite active against *Staphylococcus aureus*. *Xylaria* sp.1 showed the highest broad spectrum of antimicrobial activity against all test microorganisms. *Xylaria* spp., which are common endophytic inhabitants of most tropical plants investigated (Liu *et al.*, 2007) have been previously investigated for their production of new metabolites and have proven to be a good source of bioactive compounds (Espada *et al.*, 1997).

There are very few reports, however, on endophytic fungi isolated from Dipterocarpaceae plants in Thailand.

Further investigation of endophytic fungi is considered to be importance since they hold promise as a source of new drugs and novel bioactive metabolites with a high activity against pathogenic microorganisms.

Table 3. Inhibition zones resulting from crude extracts against the test microorganisms.

Endophytic fungi	Inhibition zone (mm)				
	BACIL	STAPH	PSEUD	ESCHE	CAND
<i>Phyllosticta</i> sp.SS6	-	-	-	-	-
<i>Phyllosticta</i> sp.DO7	-	-	-	-	-
<i>Pestalotiopsis</i> sp.DT1	14.6±0.5	10.8±0.2	-	-	-
<i>Pestalotiopsis</i> sp.DO2	20.1±0.7	14.6±0.5	-	6.8±0.2	-
<i>Nodulisporium</i> sp.DT6	15.8±0.2	12.6±0.5	8.3±0.5	9.3±0.5	16.3±0.5
<i>Nodulisporium</i> sp.SO4	8.8±0.2	9.1±0.2	8.1±0.2	-	-
<i>Furarium</i> sp.SS1	7.3±0.5	10.6±0.5	-	-	-
<i>Phomopsis</i> sp.DT3	6.3±0.5	-	-	-	-
<i>Phomopsis</i> sp.SS4	-	-	-	-	-
<i>Phomopsis</i> sp.SO1	6.3±0.5	-	-	-	-
<i>Paecilomyces</i> sp.DO5	11.6±0.5	-	-	-	-
<i>Penicillium</i> sp.SO3	11.5±0.5	8.3±0.5	-	-	-
<i>Penicillium</i> sp.SS10	8.6±0.5	-	-	-	-
<i>Penicillium</i> sp.DO4	8.0±0.8	-	-	-	-
<i>Xylaria</i> sp.1 DT10	12.3±0.5	9.5±0.2	8.5±0.2	7.6±0.5	-
<i>Xylaria</i> sp.1 SO7	13.6±0.5	9.1±0.7	-	-	-
<i>Xylaria</i> sp.1 DO9	7.3±0.5	10.3±0.5	8.3±0.5	6.5±0.7	17.6±0.5
<i>Xylaria</i> sp.2 SS8	19.3±0.5	13.5±0.5	-	-	-
<i>Xylaria</i> sp.3 DO18	6.6±0.4	7.1±0.2	7.0±0	6.2±0.2	-
<i>Daldinia</i> sp.SO14	12.3 ±0.5	8.6±0.5	6.0±0	-	-

Values are mean (±SE) of three replications.

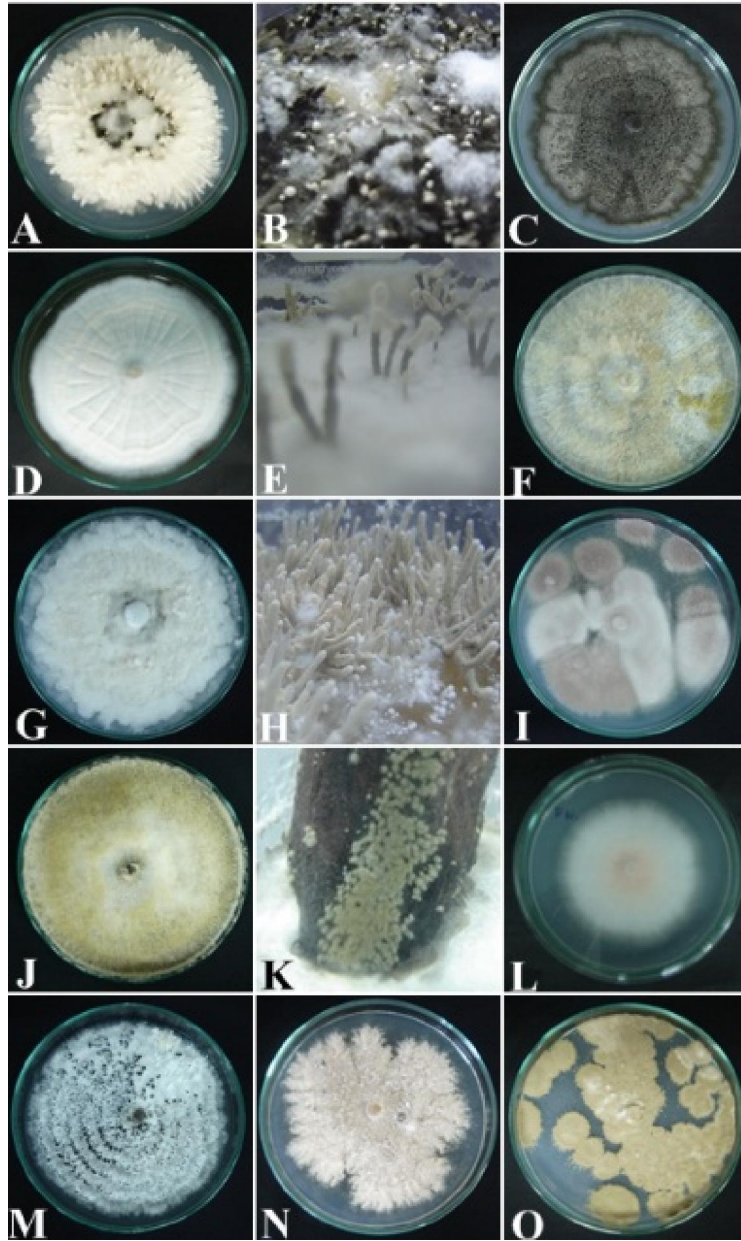


Fig. 1. Endophytic fungi of different morphotaxa; A and B (*Xylaria* sp.1), C (*Phyllosticta* spp.), D and E (*Xylaria* sp.2), F (*Nodulisporium* spp.), G and H (*Xylaria* sp.3), I (*Paecilomyces* sp.), J and K (*Daldinia* sp.), L (*Fusarium* sp.), M (*Pestalotiopsis* sp.), N (*Phomopsis* sp.) and O (*Penicillium* sp.).

References

- Bacon, C.W. and White, J.F. Jr. (1994). Biotechnology of endophytic fungi of grass. CRC press. Florida. USA. 518p.
- Barnett, H.L. and Hunter B.B. (1998). Illustrated Genera of Imperfect Fungi. APS press. Minnesota.USA. 218p.
- Bills, G.F. and Polishook, J.D. (1991). Microfungi from *Carpinus caroliniana*. Canadian Journal of Botany 69:1477-1482.
- Chareprasert, S., Piapukiew, J., Thienhirun, S., Whalley, A. and Sihanonth, P. (2006). Endophytic fungi of teak leaves *Tectona grandis* L. and rain tree *Samanea saman* Merr. World Journal of Microbiology and Biotechnology 22: 481-486.
- Espada, A., Rivera-Sagredo, A., Fuente, J.M., Hueso-Rodriguez, J.A. and Elson, S.W. (1997) New cytochalasins from the fungus *Xylaria hypoxylon*. Tetrahedron 53:6485–6492.
- Liu, J.Y., Song, Y.C., Zhang, Z., Wang, L., Guo, Z.J., Zou, W.X. and Tan, R.X. (2004). *Aspergillus fumigatus* CY018, an endophytic fungus in *Cynodon dactylon* as a versatile producer of new and bioactive metabolites. Biotechnology 114: 279-287.
- Liu, X., Dong, M., Chen, X., Jiang, M., Lv, X. and Zhou, J. (2008). Antimicrobial activity of an endophytic *Xylaria* sp.YX - 28 and identification of its antimicrobial compounds 7-amino-4-methylcoumarin. Applied Microbiology and Biotechnology 78:241–247.
- Lumyong, S. and Boontim, N. (1998). Some metabolites of endophytic fungi are potent inhibitors of bacterial and fungal growths. Thaksin Journal 1(2): 89-92.
- Maria G.L. and Sridhar, K.R. (2003). Endophytic fungal assemblage of two halophytes from west coastal mangrove habitats, India. Czech Mycology 55: 241-251.
- Murali T.S., Suryanarayanan, T.S. and Venkatesan, G. (2007). Fungal endophyte communities in two tropical forest of southern India: diversity and host affiliation. Mycology Progress 23: 1037-1040.
- Petrini, O. (1991). Fungal endophyte of tree leaves. In Andrews, J.H. and Hirano, S.S. (eds.), Microbial Ecology of Leaves. Springer-Verlag, New York. USA. 179-197p.
- Strobel, G.A. (2003). Endophytes as sources of bioactive products. Microbes and Infection 5: 535–544.
- Suryanarayanan, T.S., Kumaresan, V. and Johnson, J.A. (1998). Foliar endophytes from two species of mangrove Rhizophora. Canadian journal of Microbiology 44: 1003-1006.
- Von Arx, J.A. (1978). The genera of fungi sporulation in pure culture. AR Gantner Verlag KG (ed) FL-9490, Vaduz. Liechtenstein. 424 p.
- Wang, F.W., Jiao, R.H., Cheng, A.B., Tan, S.H. and Song, Y.C. (2007). Antimicrobial potentials of endophytic fungi residing in *Quercus variabilis* and brefeldin A obtained from *Cladosporium* sp. World Journal of Microbiology and Biotechnology 23: 79-83.

(Received 16 March 2010; accepted 30 October 2010)